



Safe, Valued,
Loved & Learning



ZPS In-Person



Z-Connect

Face to Face
in MI Phases 4-6

Remote
in MI Phases 1-3

100% Online in all Phases

Follows Regular
Full Day
Schedule at
School

Follows Full Day
Remote Learning
Schedule from
Home



SCHEDULE

Lessons Taught by ZPS Staff in
Y5's-5th grades
Self-paced, Online Modules in
6th-12th grades

Taught by
ZPS Teachers



INSTRUCTION

Live & Video Lessons in Y5's-5th
Primarily Video Lessons, with ZPS
Staff Mentor Support in 6th-12th

Follows ZPS
Curriculum & Pacing



CURRICULUM

Aligned to
Michigan State Standards

Interventions & Special Education
Instruction and Services provided
by ZPS Staff



INTERVENTION

Special Education Instruction and
Services provided by ZPS Staff

ZPS
Extra Curricular
Activities
available

Extra
Curricular
Activities not
available



EXTRA
CURRICULAR

ZPS Extra Curricular Activities
available during Michigan Phases 4-6

Typical Support,
Communication
& Homework
Expectations

Daily Monitoring &
Guidance of
Student Progress
with Consistent
Communication



PARENT
INVOLVEMENT

Frequent Monitoring & Guidance of
Student Progress with Consistent
Parent Involvement and
Communication

Best for students who thrive in
environments that are interactive
with teachers and peers

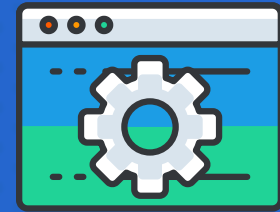


BEST FIT

Best for primarily independent,
self-directed learners who are not
yet ready to be in the school setting
during the COVID-19 pandemic



HARDWARE



SOFTWARE

Devices that are required to store and execute (or run) the software.



DEFENITION

Collection of instructions that enables a user to interact with the computer. Software isa program that enables a computer to perform a specific task.

Input, storage, processing, control, and output devices.



TYPES

System software, Programming software, and Application software.

CD-ROM, monitor, printer, video card, scanners, label makers, routers, and modems.



EXAMPLES

Quickbooks, Adobe Acrobat, Winoms-Cs, Internet Explorer, Microsoft Word, Microsoft Excel.

Hardware starts functioning once software is loaded.



INTER DEPENDENCY

To deliver its set of instructions, Software is installed on hardware.

Hardware failure is random. Hardware does have increasing failure at the last stage.



FAILURE

Software failure is systematic. Software does not have an increasing failure rate.

Hardware wears out over time.



DURABILITY

Software does not wear out over time. However, bugs are discovered in software as time passes.

Hardware is physical in nature.



NATURE

Software is logical in nature.